

CABINET & JOINERY HARDWARE



JOSEPH GILES

Exquisite Functionalism



Cube Edge Pull in Mid
Antique Brass (EP1003).
Rolled & Hammered
Lever Handle in Mid
Antique Brass (LV1047).

CONTENTS

1-2	About Us
3-4	The Collection
5-8	Classical
9-12	Contemporary
13-16	Minimalist
17-20	Organic
21-24	Art Deco
25-26	Wardrobe Hardware
27-28	Joinery Hardware
29-30	Signature Metal Finish Options



Thurloe Cabinet Pull in Mid
Antique Brass with Shagreen
Leather (CP1003).

ABOUT US

Here at Joseph Giles, we create the finest interior hardware and accessories. Down to the smallest screw, our endeavour remains the same: to form beauty in every detail. This purpose affords designers the freedom to use architectural hardware to make a statement, or to support a wider design scheme in an understated way.

Designed and made in Britain, our range of hardware is the result of 25 years' worth of constant improvement – never settling for mediocrity and paying attention to detail that most wouldn't notice. It's a discipline we've learnt from our clients and has shaped who we are and what we do today.

THE COLLECTION

Our collection of cabinet and joinery hardware encompasses an eclectic selection of design styles, with one underpinning principle: each piece is created using only the finest quality solid brass and is available for you to customise from a selection of signature finishes.

Here, we're sharing our top pieces, grouped by the design movement the hardware was inspired by, from the famous Dewhurst collection, inspired by the glamour of Manhattan circa the 1920s when Art Deco reigned, to the Buckland cabinet pull, which draws inspiration from the 19th century Arts and Crafts movement and the seminal British architect: Herbert Tudor Buckland.

Take a journey through some of the design movements that have shaped the identity of these collections, and influenced what interior design means to us today.

This booklet showcases some of our most popular pieces. To see our entire interior hardware collection, head over to josephgiles.com.

Semi-Circular Hammered
Cabinet Handle in Mid
Antique Brass (CH1082).



CLASSICAL

Classical design is characterised by balance, order, and proportion, where rich tones are typically dominant and a space is designed around a focal point, for example a piece of art or a fireplace.

More ornate in character, classical design usually involves a lot of detailing and is greatly influenced by Palladianism: an architectural style based on the work of Venetian architect, Andrea Palladio in the 16th century.

Cheval Swing
Cabinet Pull
in Mid Antique
Brass (CP1012).



CLASSICAL

This collection of cabinet hardware has been inspired by several historical periods, with particular focus on the Georgian period, and the early 20th century. We've focused on symmetry and detailing, and used art, architecture and the design principles that mark classical design to form our design process.



Hurleigh Cabinet Handle
Featuring soft curves
with ringed detailing.

CH1054



Huntingford Cabinet Handle
Polished, presentable, and
classic: a beautiful accessory.

CH1070



Dawson Cabinet Pull
The very essence of
classical contemporary design.

CP1021



Bartlett Cabinet Pull
Harnessing the beauty
of concentric circles.

CP1004



Huntingford Cabinet Pull
Designed to match the
Huntingford cabinet handle.

CP1104



Hurleigh Cabinet Pull
Creating a matching set
with the Hurleigh handle.

CP1005



Bartlett Cabinet Handle
Matching perfectly with
the Bartlett pull.

CH1071



Buxton Cabinet Handle
A nod to Georgian
period architecture.

CH1106

CONTEMPORARY

Reflecting the popular styles of the present day, contemporary design is indefinite in nature and borrows qualities from several other design movements, including minimalism, Art Deco and modernism.

Whilst the definition is fluid, contemporary design does hold certain pronounced characteristics. For now, it's embodied in organic shapes, neutral palettes, and clean lines, paired with natural textures.

Cube Edge Pull in Mid
Antique Brass (EP1003).



CONTEMPORARY

From the clean, interesting texture of the linear knurl, to the Ashworth handle, which pays homage to the Bauhaus movement, here are the top picks from our collection of contemporary cabinet hardware.



Thurloe Cabinet Handle
Wrapped in hand-stitched
bridle leather.

CH1048



Ashworth Diamond Knurl Handle
Paying homage to the Bauhaus
movement, with the addition
of a diamond knurl.

CH1076



Archibald Cabinet Pull
Designed with Bauhaus
principles in mind.

CP1006



Montgomery Cabinet Handle
For a simple and solid grip.

CH1079



Volume Cabinet Pull

Using a linear knurl to mimic a vintage radio knob.

CP1144



Montgomery Cabinet Pull

The original pull, redesigned with a linear knurl.

CP1146



Cube Edge Pull

The epitome of minimal contemporary ironmongery.

EP1003



Moon Edge Pull

A half-moon shaped grip, with soft and unobtrusive appeal.

EP1014

MINIMALIST

Influenced by Japanese traditional design and architecture, minimalism truly took off in the 1980s and was considered an antidote to the times, which were driven by industrialization, an increasing population, and technological advances.

A pared back approach, where the object is stripped to its core function, symbolises the movement.

Alesca Edge Pull in Mid
Antique Brass (EP1016).



MINIMALIST

Nowadays, we reference minimalism in the 'less is more' philosophy. In fact, this phrase was adopted by architect Ludwig Mies van der Rohe in the 1950s to describe his aesthetic. Rohe's approach of extreme simplicity has inspired many designs, including one of our cabinet handle collections, which is named accordingly.



Esprit Cabinet Handle

CH1093

Playing on the angular aesthetic of the Lotus Esprit.



Fonteyn Cabinet Handle

CH1085

A delicate form in perfect balance.



Alesca Edge Pull

EP1016

Integrated into the door for a handleless finish.



Jude Cabinet Pull

CP1103

A modern take on a handle popular in the 60s.



Fonteyn Cabinet Pull
Mirroring the distinctive
form of the Fonteyn handle.

CP1119



Rohe Integrated Cabinet Handle
Inspired by Mies van der Rohe,
the father of minimalism.

CH1101



Recessed Pull
Perfect for sliding cabinet
or wardrobe doors.

SF1079



Falmouth Recessed Pull
With no visible fixings
for a flawless finish.

CP1137

ORGANIC

Taking its cues from nature, organic design blurs the lines between man-made elements and natural forms.

Preferring neutral and earthy tones and avoiding ornate details or embellishments, organic design focuses on simplicity, using natural textures, patterns and nature-inspired shapes to draw attention to the natural world.

Semi-Circular Hammered
Cabinet Handle in Mid
Antique Brass (CH1082).



ORGANIC

It is in this theme that we have designed some of our most beautiful textured cabinet hardware:
From the rugged Organo cabinet pull to the soft sand-like undulations of the Harlyn cabinet handle.



Rolled & Hammered Cabinet Handle CH1012
Crafted by artisans using traditional blacksmith methods.



Organo Cabinet Handle CH1027
Made from real bronze using traditional casting methods.



Molten Texture Cabinet Handle CH1032
Imitating molten, for a rippled and rugged texture.



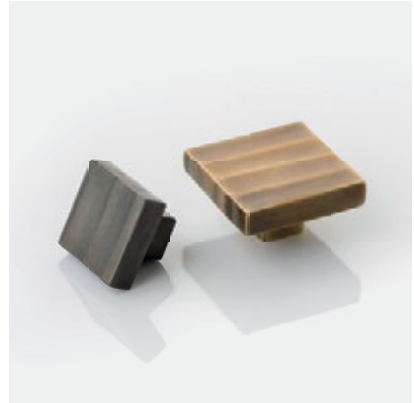
Hammered Cabinet Handle CH1082
Each piece is lovingly made, with no two the same.



Hammered Cabinet Pull

CP1014

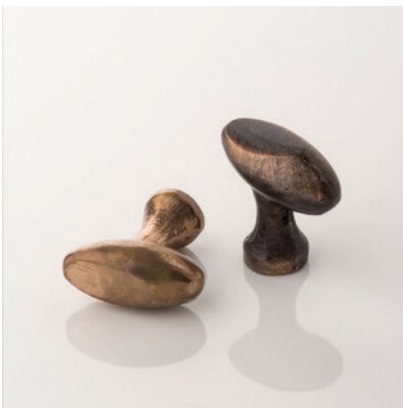
Applying a specific pressure to produce this beautiful texture.



Harlyn Cabinet Pull

CP1118

With the same soft texture as the Harlyn handle.



Organo Cabinet Pull

CP1055

For a weathered natural finish.



Harlyn Cabinet Handle

CH1083

Inspired by the effect of natural processes on sand and driftwood.

ART DECO

Reflecting a diverse mix of influences, the Art Deco movement of the 1920s is one of the hardest to define, where historical romanticism combined with the industrial innovation that marked the era brought a new design movement to life.

Although Art Deco remained a dominant style throughout the 1930s, it served as a bitter-sweet monument of a better time, a reminder of the years of wealth and decadence.

CZ Marble Cabinet Pull in Dark
Bronze Waxed with Black Portoro
Marble (CP1105).



ART DECO

With this inspired collection of cabinet hardware, we're proud to revive an element of the coveted Art Deco style: From the Harrison marking our first foray into a contemporary Deco style, combining straight lines with subtle Art Deco detailing, to the Dewhurst, where the cascading effect, created by the stepped detail, is our interpretation of the layered shapes that characterised this period of design.



Harrison Cabinet Handle CH1059
With a rounded back for a more comfortable grip.



Harrison Cabinet Pull CP1101
Combining straight lines with subtle Art Deco detailing.



Dewhurst II Cabinet Handle CH1098
An interpretation of the layered shapes that characterised this period of design.



Dewhurst II Cabinet Pull CP1131
A striking pull with texture and interest created by the stepped detail.



Thomson II Cabinet Pull

CP1077

The epitome of door jewellery, where the line detail fans out gently.



Arlington Cabinet Handle

CH1062

Reflecting the style and luxury that marked the era.



Dewhurst III Cabinet Pull

CP1132

Fusing the Arlington leg with the body of one of our most popular designs: the Dewhurst.



CZ Cabinet Handle

CP1105

Putting the spotlight on marble: a beautiful but delicate material to shape.

WARDROBE HARDWARE

From the simple belief that the inside of the wardrobe should look as good as the outside, with matching finishes from the dressing room door to the back of the wardrobe.



Round Modern Hanging Rail
End Bracket
Support Bracket

HR1004
HR1006
HR1008



Round Classic Hanging Rail
End Bracket
Support Bracket

HR1004
HR1005
HR1007



Rectangular Hanging Rail
End Bracket
Support Bracket

HR1001
HR1002
HR1003



Round Hanging Rail End Cap

HR1012



Rectangular Hanging
Rail (HR1001).
End Bracket (HR1002).

JOINERY HARDWARE & ACCESSORIES

Ensuring that even the smallest details are considered, enabling a perfect match between the joinery fittings and main hardware of the space.



Adjustable K-Pivot PV1020



Pivot Hinge Set PV1016



Solid Brass Hinge for Cabinetry HG1050



Cylindrical Shelf Support with Leather Pad FA1001



Radi Shelf Support FA1004



Switch Shelf Support with Leather Pad FA1002



Shadow Keyhole
Profile Escutcheon

ES1111



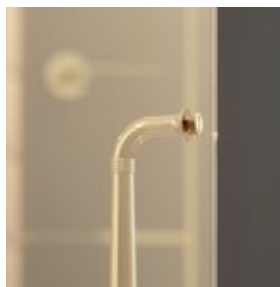
Recessed Silent
Magnetic Catch

LA1082



Flanged Recessed
Silent Catch

LA1166



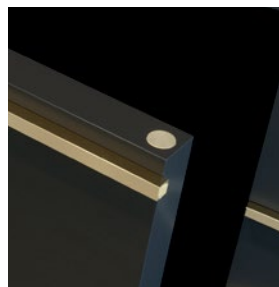
Fitting for Hardware
on Glass Doors

FT1048



Magnetic Catch
with Leather Pad

LA1081



Recessed Silent
Magnetic Catch

LA1158

SIGNATURE METAL FINISH OPTIONS

Hand-finished using traditional methods that have been passed down through generations, our signature metal finishes are available across all our solid brass products.



BBW: Brushed Brass Waxed
Finish: Living



BN: Brushed Nickel
Finish: Plated



DBZW: Dark Bronze Waxed
Finish: Living



MABW: Mid Antique Brass
Waxed
Finish: Living



PBW: Polished Brass Waxed
Finish: Living



PC: Polished Chrome
Finish: Plated



PN: Polished Nickel
Finish: Plated



BCO: Brushed Copper
Finish: Plated



BC: Brushed Chrome
Finish: Plated



PCO: Polished Copper
Finish: Plated



PMB: Polished Midnight Black
Finish: Plated



BMB: Brushed Midnight Black
Finish: Plated





Diamond Knurled
Montgomery Cabinet
Handle in Mid Antique
Brass (CH1075).

Enhancing the everyday with a harmonious blend of form and function.

Need local ideas or advice?

Give our friendly team
in New Zealand a call...

In Residence
219 Great South Road,
Greenlane, Auckland
TEL: 09 309 3023

WWW.INRES.CO.NZ/BRANDS/JOSEPHGILES