



ACQUELLO
ITALIA

l'arte della terra

Installation Guide

ITALIAN FIRECLAY SINKS

Installation Guide

Fireclay Sinks:

Strict production tolerances ensure consistent form, focused corners and flat surfaces. This makes Acquello sinks ideal for flush or under mounted bench top installations, as well as traditional apron style with an exposed front. There can be small variances in dimensions and as such we recommend your fireclay sink be supplied to the cabinetmaker prior to manufacture of the cabinets.

There are many options for configuring fireclay sinks. We have provided suggestions on the following pages.

Wastes:

Our sinks are supplied with Italian stainless steel basket strainer wastes. Waste outlets are designed to accommodate a basket strainer waste or waste disposal unit fitted with an extended collar.

Basket stainer wastes need to be sealed into the bottom of the sink with white putty or silicone sealant to account for any minor irregularity in the fireclay. Note: Plumbers sometimes install them using the rubber seal supplied with the waste but this is more suited to stainless steel sinks.

Sink protector racks:

Each sink is provided with a sink protector racks. They are made of plastic coated stainless steel and serve to protect the sink from heavy objects and protect plates and glasses accidentally dropped into the sink. Ensure that your plumber leaves this in the sink for you following installation.

> AUSTRALIA

The English Tapware Company
Freephone: 1300 01 61 81
www.englishtapware.com.au

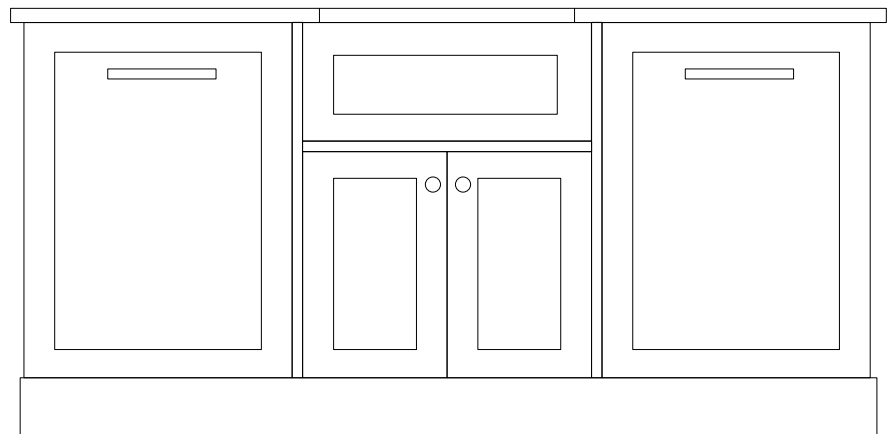
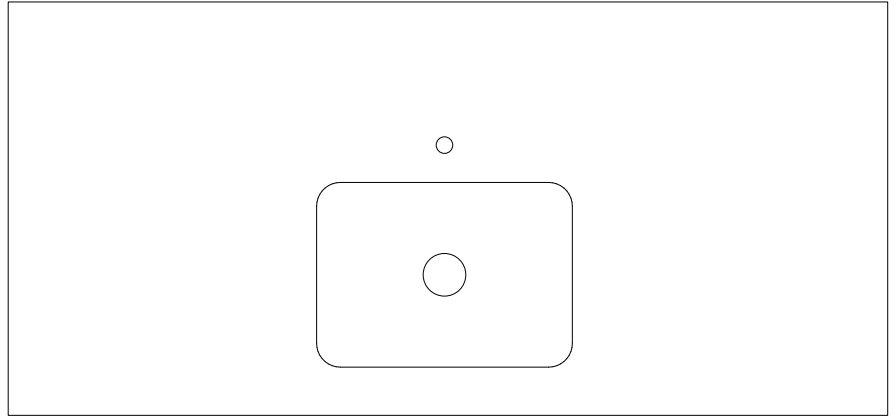
> NEW ZEALAND

In Residence
Telephone: 09 309 30 23
www.inres.co.nz

Single Configurations

Option 1:

Undermount. Suits an island bench.



> AUSTRALIA

The English Tapware Company
Freephone: 1300 01 61 81
www.englishtapware.com.au

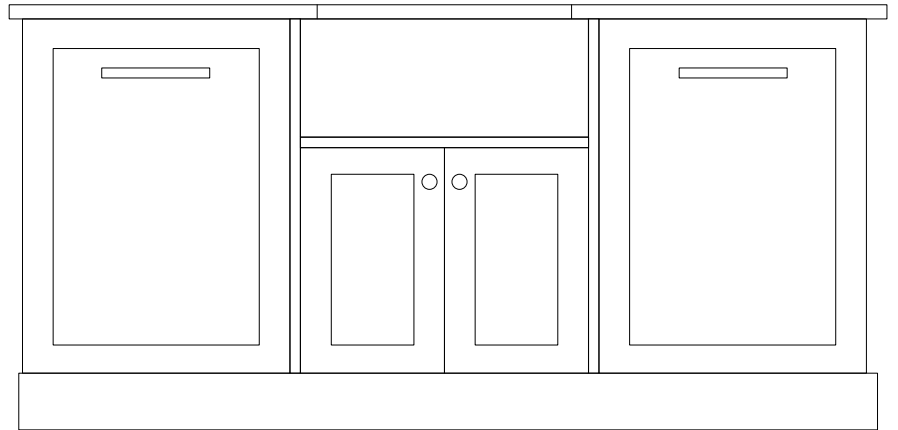
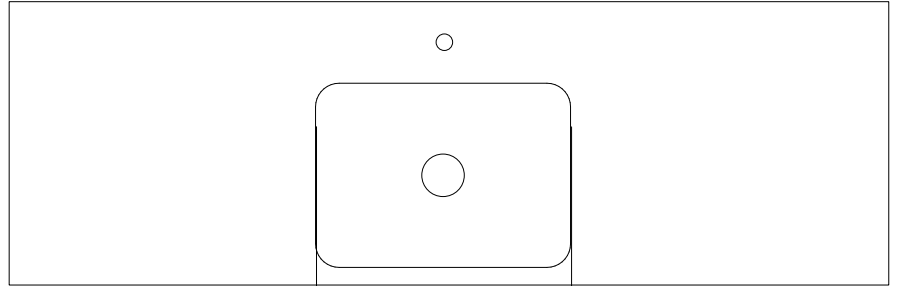
> NEW ZEALAND

In Residence
Telephone: 09 309 30 23
www.inres.co.nz

Single Configurations

Option 2:

Undermount but exposed
and flush at front.



> AUSTRALIA

The English Tapware Company
Freephone: 1300 01 61 81
www.englishtapware.com.au

> NEW ZEALAND

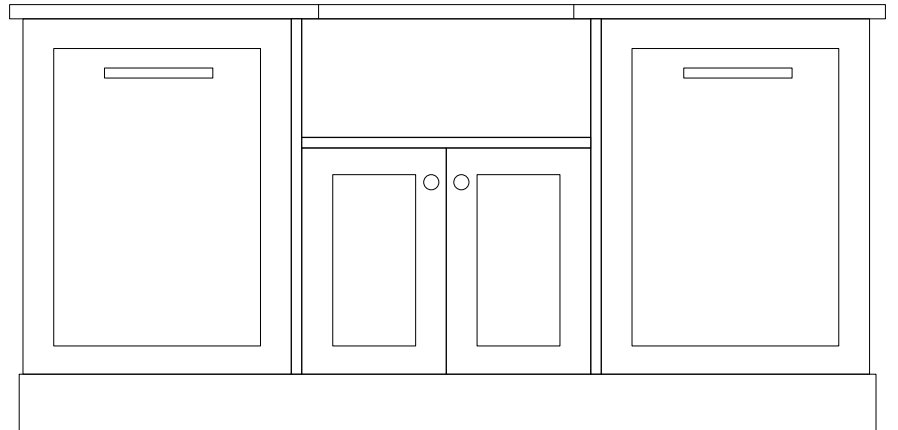
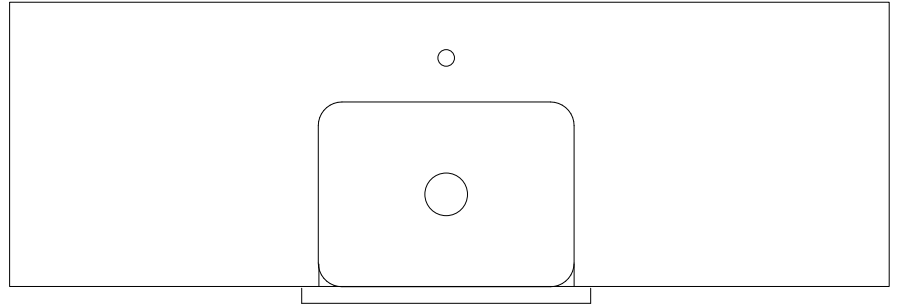
In Residence
Telephone: 09 309 30 23
www.inres.co.nz

WWW.ACQUELLO.COM.AU

Single Configurations

Option 3:

Undermount but exposed
and proud at front.



> AUSTRALIA

The English Tapware Company
Freephone: 1300 01 61 81
www.englishtapware.com.au

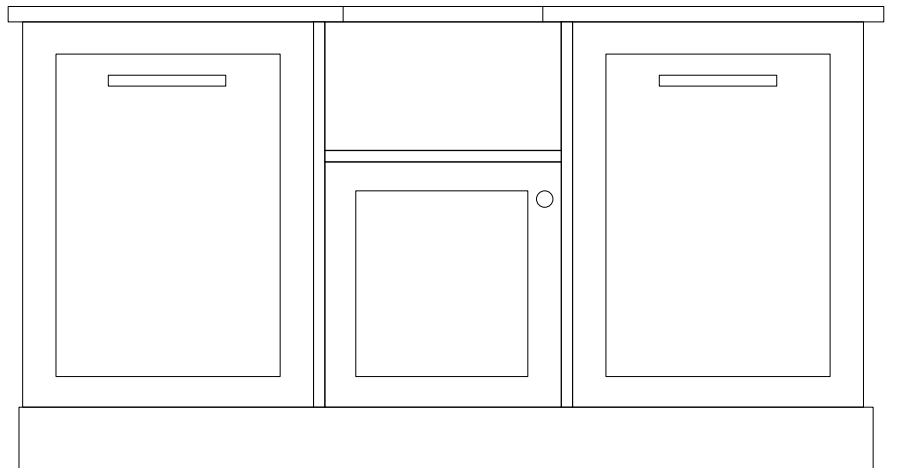
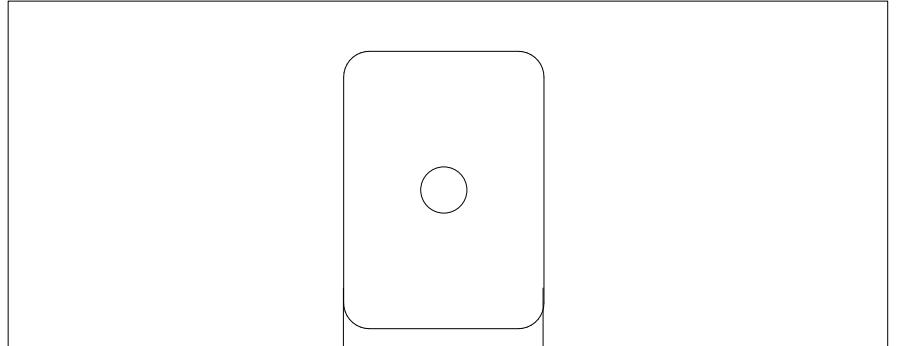
> NEW ZEALAND

In Residence
Telephone: 09 309 30 23
www.inres.co.nz

WWW.ACQUELLO.COM.AU

Single Configurations

Option 4: Short side exposed and proud at front.



> AUSTRALIA

The English Tapware Company
Freephone: 1300 01 61 81
www.englishtapware.com.au

> NEW ZEALAND

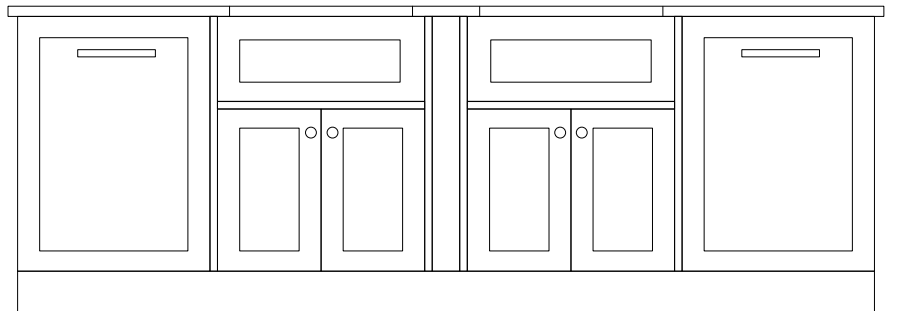
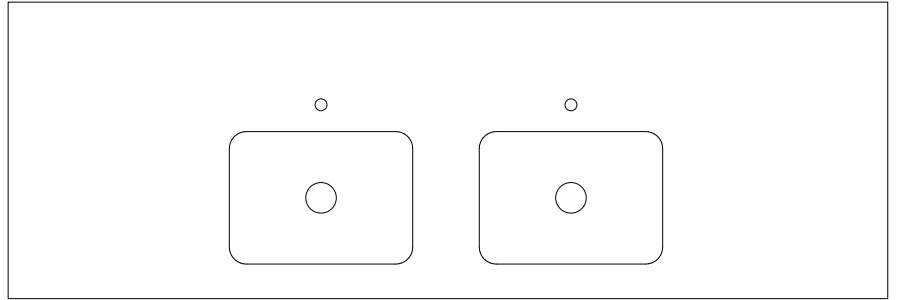
In Residence
Telephone: 09 309 30 23
www.inres.co.nz

WWW.ACQUELLO.COM.AU

Double Configurations

Option 1:

Undermount. Suits an island bench.



> AUSTRALIA

The English Tapware Company
Freephone: 1300 01 61 81
www.englishtapware.com.au

> NEW ZEALAND

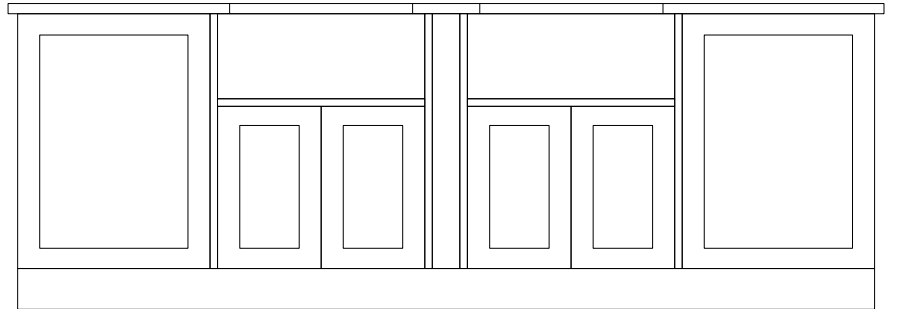
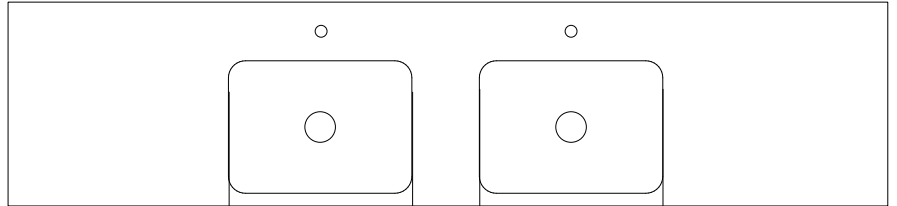
In Residence
Telephone: 09 309 30 23
www.inres.co.nz

WWW.ACQUELLO.COM.AU

Double Configurations

Option 2:

Undermount but exposed
and flush at front.



> AUSTRALIA

The English Tapware Company
Freephone: 1300 01 61 81
www.englishtapware.com.au

> NEW ZEALAND

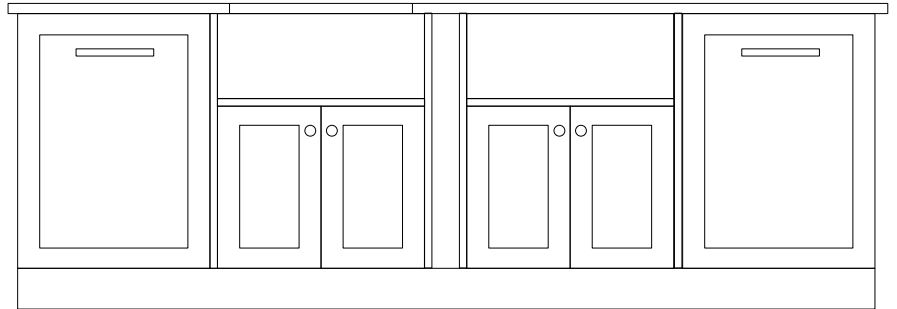
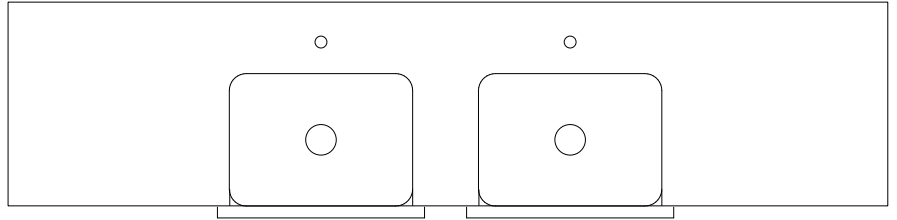
In Residence
Telephone: 09 309 30 23
www.inres.co.nz

WWW.ACQUELLO.COM.AU

Double Configurations

Option 3:

Undermount but exposed
and proud at front.



> AUSTRALIA

The English Tapware Company
Freephone: 1300 01 61 81
www.englishtapware.com.au

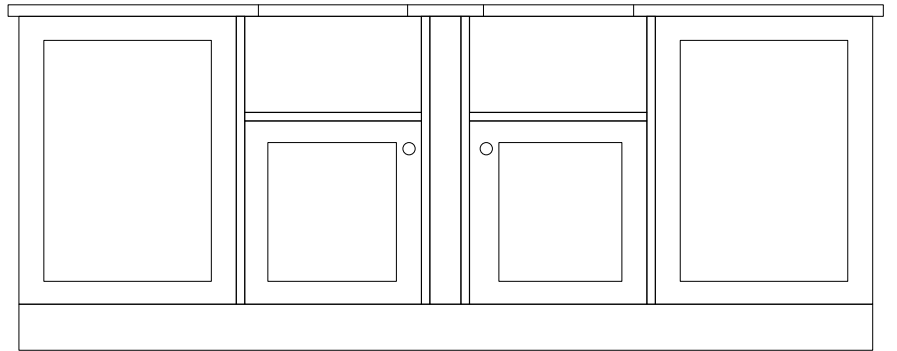
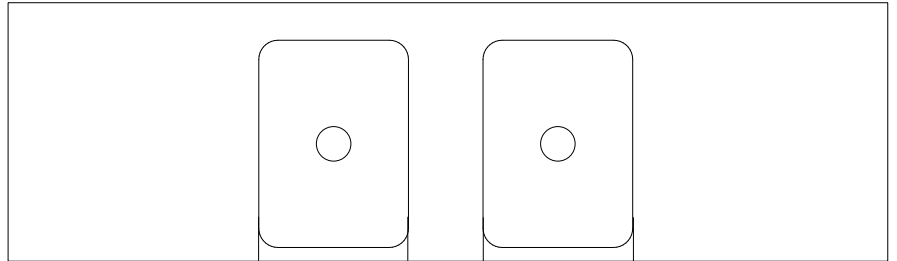
> NEW ZEALAND

In Residence
Telephone: 09 309 30 23
www.inres.co.nz

Double Configurations

Option 4:

Short side exposed
and proud at front.



> AUSTRALIA

The English Tapware Company
Freephone: 1300 01 61 81
www.englishtapware.com.au

> NEW ZEALAND

In Residence
Telephone: 09 309 30 23
www.inres.co.nz

WWW.ACQUELLO.COM.AU

ACQUEDOTTO ITALIA

